

**SONY**

Hi-Fi Products  
Service Bulletin

Sony Service Company - Technical Services  
A Division of Sony Corporation of America  
Sony Drive, Park Ridge, New Jersey 07656

**Model:** TC-RX70

**No.** 140

**Subject:** No Power - R725/R726 Open

**Date:** November 7, 1990

**Symptom:**  
(11)

R725/R726 opens due to the rush current.

**Solution:** If this occurs, modify the circuit as follows:

Ref. No.	Description		Part Number
	Former	New	
R725	0.22 Ohm 1/4W Fusible Resistor	Jumper Wire	
R726	0.22 Ohm 1/4W Fusible Resistor	Jumper Wire	
JW5	Jumper Wire	0.22 Ohm 1/4W Fusible Resistor	1-219-136-11
JW7	Jumper Wire	0.22 Ohm 1/4W Fusible Resistor	1-219-136-11
JW9	Jumper Wire	0.22 Ohm 1/4W Fusible Resistor	1-219-136-11

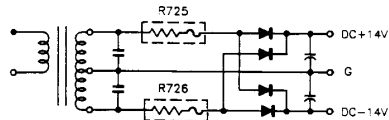


Fig. 1

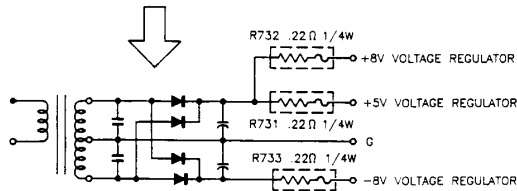


Fig. 2

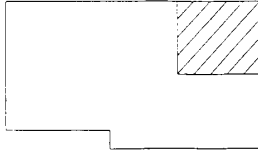
(Continued)

Reference: AV90034

PRINTED IN U.S.A.  
CSA-131090-7

CSA-131090-7

【MAIN BOARD (CONDUCTOR SIDE)】



Install a 0.22Ω fusible resistor  
instead of a jumper wire.  
(Remove JW9.)

Install a 0.22Ω fusible resistor  
instead of a jumper wire.  
(Remove JW5/JW7.)

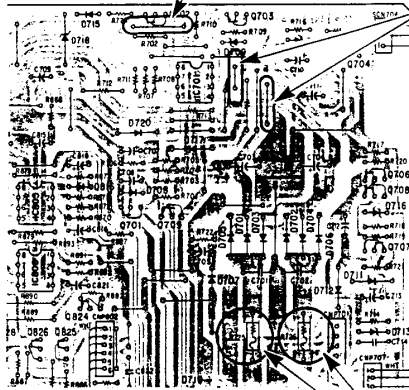


Fig. 3

Install a jumper wire instead of a  
0.22Ω fusible resistor.  
(Remove 0.22Ω.)

Description	Part Number
0.22Ω fusible resistor	1-219-136-11